



**"Beat more burglars with the only security mesh that uses Screw-Clamp™ technology."**

Patio Enclosures

# Commercial Systems

Windows

Doors

Cyclone

Debris Screens

Safe-S-Capes®

- Single Sliding
- Double & Triple Sliding
- Hinged
- Inswinging

Balustrade &  
Pool Fencing

Fire  
Attenuation

WERS Rated



## Secure your Office or Factory

Crimsafe Commercial products brings an even greater level of security to your premises. Commercial premises need heavier protection than domestic residences. The fact that there can be very high value items inside, and not many people around to hear the noise can encourage a burglar to spend more time and bring extra-heavy equipment to do the job.

We had to engineer a new level of security to combat this threat.

For Crimsafe Commercial Systems we made 4 big changes:

1. We increased the number of tamper-proof screws holding the clamp together by a factor of 5 (there's one every 25mm along the clamp)
2. We drilled them into the clamp in a staggered fashion to resist any tendency for a single line of screws to weaken the mesh under extreme pressure

3. We doubled the clamp-to-mesh contact area for extra "vice-like" grip
4. We increased the thickness of the aluminium frame by more than 60% to lengthen the screen's resistance time under the heaviest attacks

*More about our Commercial Systems overleaf...*



Continued from previous page..

We knew we had created something special when we saw our Commercial System withstand a cyclone missile and ballistic test.

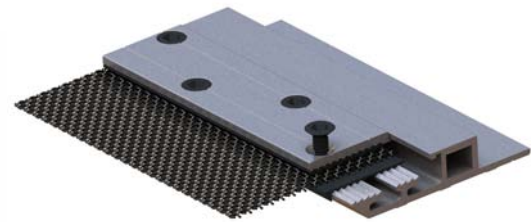
We had BHP's testing centre recreate a Category 4 Cyclone to test its strength under extreme conditions. They shot a piece of hardwood weighing 4 kgs into the screen at a speed of 72 kilometres per hour (20 metres per second). Then they took a series of 5 steel balls, each weighing two grams and almost a centimetre in diameter, and sent them smashing into the screen at 108 kilometres per hour (30 metres per second).

The Commercial product was dented but unbroken.

Quite simply it's incredibly strong. If you saw just how many screws go into it, and how thick the frame is, you would agree that it is impossible to penetrate with any common attack. And unlike old fashioned security bars (which can be pried apart with a jack) it looks fantastic on your building.

## Applications

- Retail Outlets
- Factories & Warehouses
- Banks
- Prisons
- Military Installations
- Detention Centres
- Schools
- Areas requiring an extra level of security
- Areas requiring cyclone protection



*Only Crimsafe drives a screw right through mesh and frame – for unbeatable strength*

## Features & Benefits of Crimsafe Commercial Systems

Five Times the Screws	Drastic increase in strength and security
Double Clamping System	Increases the clamp-to-mesh contact area, thereby giving stronger and more secure grip on the mesh
Larger and Thicker Sections	60% thicker frame for added strength under prolonged attack. More metal for a would-be thief to bash in or attempt to jemmy, making a break-in even less likely.
Screw-Clamp Security	Only Crimsafe clamps 304 Tensile-Tuff <sup>®</sup> security mesh between 2 serrated pieces of metal, then drives a screw right through both mesh and frame to ensure a "vice-like" grip...and beat more burglars
Tamper-Resistant Screws	Exclusive to Crimsafe. Screws can only be applied or removed by a tool registered with Crimsafe. This ensures the integrity of your security system.
Custom Built	Means a perfectly fitted job. Product can be made to fit the design and format of your door or window.
Enhanced Work Environment	Crimsafe provides unhindered views, keeps out mosquitoes, and lets you keep a cool, safe business in summer
WERS Rated	Improves the energy rating of glass windows and doors and gives your home the ability to gain a higher home energy star rating.
Passes Australian and Industry Standards	Crimsafe always exceeds the relevant Australian and Industry Standards for security. Passes Category 4 Cyclone Missile and Ballistic Test.
Range of Colours	Crimsafe stocks a range of standard colours so that the system you buy complements your business. Other colours are available on request.
Guaranteed for 10 years	Crimsafe warrants the product from defects in materials under the conditions of normal use for up to 10 years from the date of purchase. Please refer to our Warranty & Care Guide for more information.

Contact your local Licensee today:



CRIME PREVENTION PARTNERS

Visit [www.crimsafe.com.au](http://www.crimsafe.com.au)